



# Hardware & Networking Course



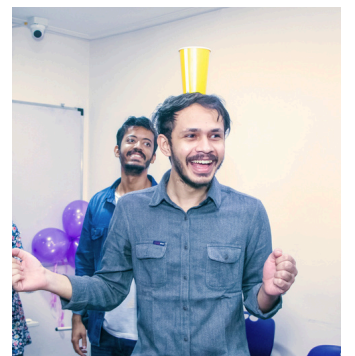
Get Placed in top Tech Companies

# 10<sup>th</sup> ANNIVERSARY CELEBRATION

Since 2013

We have successfully trained & placed 1000+ Candidates in Top MNC's throughout India

Join Awdiz For a Bright IT Future





***“Most Trusted IT Institute In Mumbai 2024”***  
Awarded by National Fame Awards 2024





# About Awdiz

Awdiz is No.1 IT Training Institute in Navi Mumbai For Freshers With 100% Job Guarantee Courses.

Established in 2013, We Are One of The Premium Training Institute Delivering Job Assured Trainings on Networking, CCNA, MCSA, Linux Administration, Windows Administration, Full Stack Development, Digital Marketing, and UI UX Design Course.

We are committed to quality education and our 10+ years of experience has made us serve over 45+ IT clients across 13 cities in India for all the freshers off campus placements.

Our strength is our **Guaranteed Placement for all our IT courses.**



5000+

Students Served



100+

Companies



100%

Parents Satisfaction



96%

MNC Placements

★ Trustpilot 4.8

Google 4.9

AmbitionBox 5.0

# Our Placements

At AWDIZ, we recognize that your primary goal is to land rewarding and fulfilling career opportunities in the IT industry. Our commitment to your success extends beyond education, we are dedicated to helping you launch your career.



**Sandeep Yadav**  
**2.3 LPA package**

Landed a job in July 2023



**Vaibhav Rewale**  
**3.0 LPA package**

Landed a job in July 2023



**Rushikesh Gunjal**  
**2.2 LPA package**

Landed a job in July 2023



**Aditya Kumbhar**  
**2.8 LPA package**

Landed a job in July 2023



**Kunal Pol**  
**2.8 LPA package**

Landed a job in July 2023



**Raj Sankhe**  
**4.0 LPA package**

Landed a job in July 2023



They Fulfilled their Dreams



YOU CAN BE THE NEXT!



## INSTALLING MICROSOFT OFFICE

Office installation and config,  
Installing Microsoft Office,  
MS Office templates & add-ins



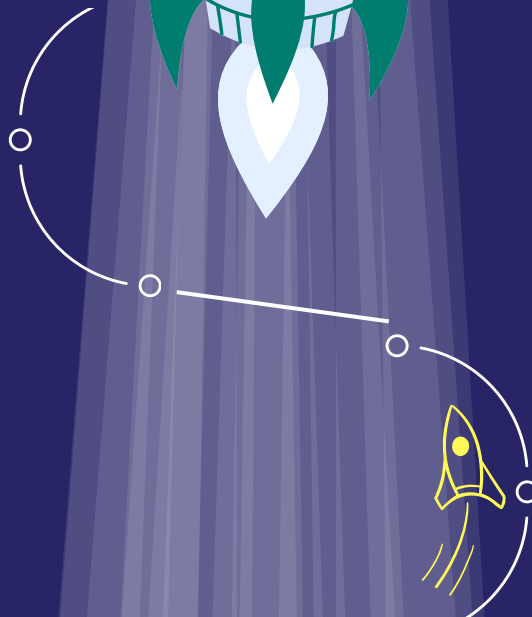
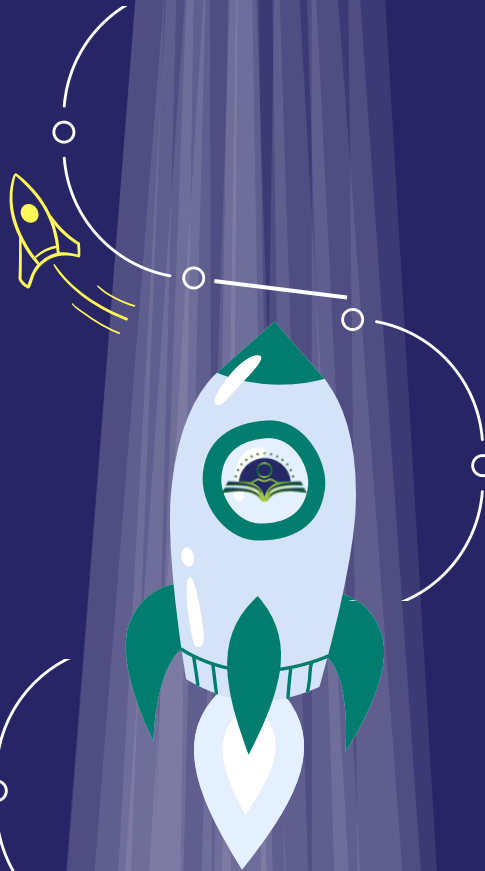
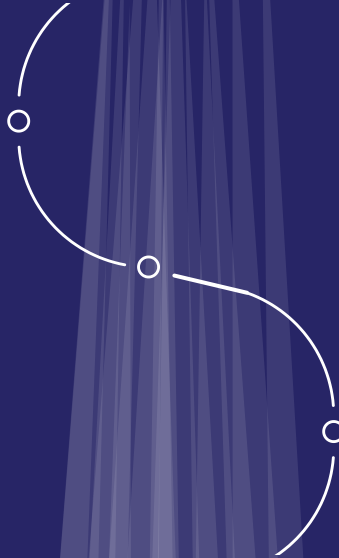
## NETWORK ESSENTIALS

ISO/OSI Model, Network Media  
and Topology, Network Designs,  
Connecting Networks Protocols



## BIOS CMOS BOOT PROCESS

Bios, CMOS, Boot process,  
RAM, SMPS

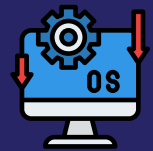


## HARDWARE AND NETWORKING



## TROUBLESHOOTING

Desktop Maintenance, security  
policy, Input/output devices,  
Plug and play device



## OPERATING SYSTEMS

Installation, Partition,  
Up-gradation,  
Formatting of OS



## HARDWARE COMPONENTS

Monitor, CPU, Mouse, Keyboard,  
UPS, Cables, Motherboard,  
Personal Safety

YOUR JOURNEY STARTS HERE



**6 to 7 years**

## **Network Manager 10 - 20 LPA**

Network Manager  
Lead Network Engineer  
Infrastructure Engineer

## **Senior Network Engineer 7-10 LPA**

Senior Network Engineer  
Network Operations Center Analyst  
Network Security Specialist

**3 to 5 years**

## **Mid-level Network Engineer 4 - 7 LPA**

Network Engineer  
Systems Administrator  
IT Support Engineer

**1 to 2 years**

## **Junior Support Technician 2 - 4 LPA**

Network Support Technician  
Junior Network Engineer  
Helpdesk Technician

**CAREER STARTS HERE**

# Program Details

Are you ready to embark on an exciting journey into the world of Hardware and Networking? Our comprehensive course is designed to equip you with the skills and knowledge needed to become a proficient Hardware and Network Engineer.

## Program Duration

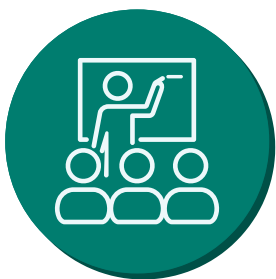
- **Course Duration :** 3 Months | Blended
- **Total Hours :** 100 hours

## Eligibility

- **Education :** Any Graduation
- **Experience :** No Prior Experience Required

## Weekly Commitment

- **Lectures & Workshops :** 8 hours/week
- **Homework & Projects :** 12 hours/week



2 Classes Offline  
2 hours each



2 Classes Online  
2 hours each



Study at your  
own pace



Get Hands on  
Experience

# Student Success Stories

These testimonials are just a glimpse of the many success stories that have emerged from our institute. We are committed to nurturing talent, honing skills, and helping students reach their career aspirations.

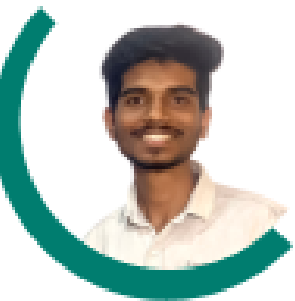


**Sandeep Yadav**

Desktop Support



Awdiz helped me shape my career with their excellent coaching and placement system. They did their best at providing me many placement opportunities and helped me secure a 2.3 LPA offer with ease...



**Kunal Pol**

Azure Admin



A Simple Google review got me a job! Google Recommended me Awdiz, and then I called for a Demo lecture, after which I was satisfied and decided to pursue my Hardware & Networking Course at Awdiz...



**Aditya Kumbhar**

Technical Support



I was empowered at by this course! It helped my crack a 2.8 LPA and I was overwhelmed with emotions. My experience at Awdiz was very Enriching I would recommend it to my fellow Juniors...



**Vaibhav Rewale**

Technical Support



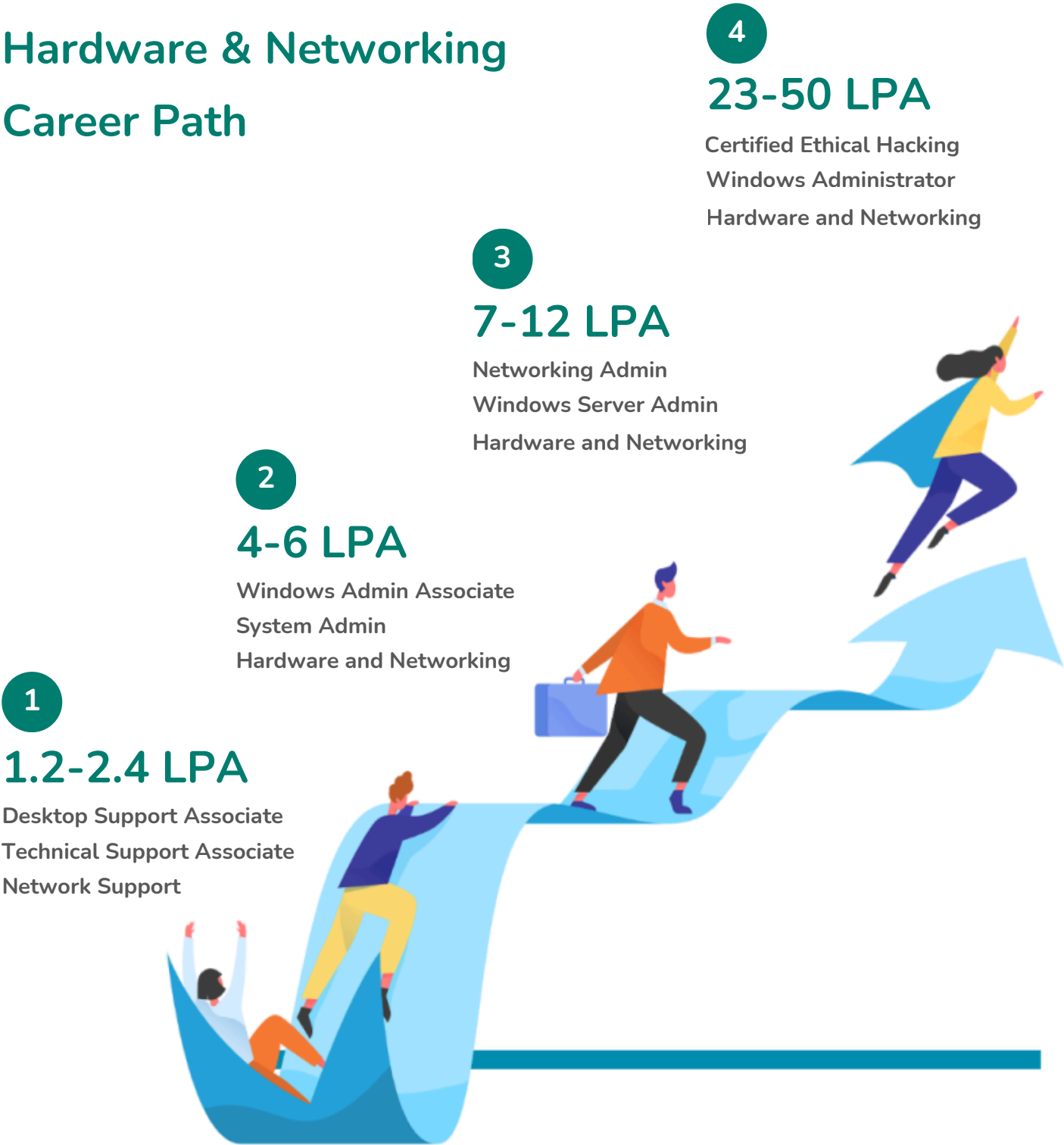
Being from a Non-Technical background getting placed in a Top IT company Company was just like a dream come true. Awdiz helped me achieve this with their excellent placement support services...

And Many More...

# Career Opportunities

Unlock a world of exciting career opportunities, with the Knowledge and skills gained from our and achieve your professional aspirations.

## Hardware & Networking Career Path



# Program Curriculum

Get the best in class knowledge of the all the Hardware & Networking essentials and be future ready!

## Module 1

### Computer Fundamentals

- Computer Fundamentals History and Generations of Computer (Gen 1 to 5)
- Architecture of the Computer
- Description of Different parts of a computer
- Idea about System Software and Application Software. Operating system concept (Basic knowledge)
- Fundamentals of Electricity, About AC and DC

### Practicals

- Identification of different Components of a computer and demonstration and uses of them
- Different Tools / equipment used for assembling/ disassembling a PC

## Module 2

### Basics of Power System in a Computer

- SMPS Features, Functions
- Types of SMPS
- Power distribution in SMPS
- Working Principle of each type of UPS
- Connecting, Maintenance and Troubleshooting

### Practicals

- A running SMPS demonstration
- Installation of a SMPS on a cabinet
- Isolated Power testing by sorting

## Module 3

### Introduction to Basic Input Output System

- Introduction to BIOS/CMOS Setup, POST (Power on Self-Test)
- Demonstration of BIOS/CMOS Configuration (Date, Time, Enable/Disable Devices)
- Dual BIOS Feature BIOS/CMOS Setup, Booting Sequence/Boot Order

### Practicals

- Demonstration of BIOS / CMOS setup, POST in a Computer step by step
- Demonstration of different types of configurations and effect of changes in an existing BIOS feature for a system
- Implementation of Dual Booting setup preferably in windows with Linux (Ubuntu)

## Module 4

### Introduction to Operating System

- Definition and types of Operating Systems. Functions & Features of OS
- MS-DOS (Prelims), Windows8.1, 10, 11, Red Hat 7 / Fedora Linux Server, Ubuntu, MAC
- Process of Booting the Operating System
- Installation of Windows8.1, 10, 11 Activation and Automatic Updating procedures
- Installation of Linux Server and Creating groups with file/ resource permission

### Practicals

- Demonstration on Windows Using: Safe Mode, Safe Mode Boot options, Last Known Good Configuration, etc
- Demonstrating Windows Diagnostic Tools, System Restore, Creating Restore point, restore using Restore point, etc
- Windows Recovery using System Factory Defaults/Recovery tools
- Installation of driver routines for the system

## Module 5

### Computer Management.

- Computer Management, Disk Management, Defragmentation
- Services and Applications, Local Users and Groups
- Advanced System Settings, Device Manager, Task Manager

### Practicals

- Demonstrating computer management in Windows using Disk manager, Shrink, Extend, and Creating Logical Drive etc
- Creating users, groups etc
- Installing & uninstalling program, devices driver from control panel, uses of task manager

## Module 6

### Disk Partitioning

- Demonstration of Partitioning of Hard Drive/ SSD - Primary, Extended, and Logical partitions using Partition Tools in Windows through Disk Manager
- Demonstration of Partitioning of Hard Drive/ SSD - Primary, Extended, and Logical partitions using Partition Command (mkpart) in Linux

## Module 7

### Details about Central Processing Unit & Main board

- Definition of CPU, Architecture, Speed, Types of CPU (ATX and AT technologies) 32/64 Bit
- Types process or technologies like Clock speed, Bus speed, Cache memory
- Threading technologies, Core technologies, IRQ & DMA Technologies
- What is "I" Technology, Core series (i3, i5, i7)
- To explain about PGA and BGA and LGA Model processors, Pins/Socket
- Definition, Architecture, Compatibility with CPU's, Chipsets and Brands
- What is Chipset, what is FSB, what is Bus, CPU Sockets, Interface Ports used to connect different Peripherals
- I/O Ports (PS/2, Serial, Parallel, USB, VGA, HDMI, Audio, Ethernet, etc.)

## Practicals

- Demonstration of different generation CPU (Intel /AMD), showing clock speed, Bus speed & other features
- Hand on practice to install CPU on the slot provided on the compatible main board
- Hand on practice to install CPU on the slot provided on the compatible main board
- Installation of external cards viz. graphics, sound, Ethernet etc. on the main board

## Module 8

### Primary and Secondary Memory

- Introduction to RAM, ROM, Cache Memory, Buffer Memory, Virtual Memory Speed, Timeline
- (EDO, NON-EDO, SD, RD, DDR, DDR2, DDR3, DDR4), Hybrid Memory
- Comparing and Installing RAM, Memory Module Form Factor, etc
- Introduction to HDD& SSD, Types, Functioning of HDD, Functioning of SSD, Dual Usage
- Interface Types of HDD & SSD (IDE or PATA, SATA, SCSI, PCI -E, MSATA, M.2), Data storage technique
- Tracks, Sectors, Cylinders, Cluster MBR, FAT Area, DIR Area, Zero Track
- IDE Jumper settings (Primary/Secondary), (Master/Slave/Cable Select)
- Installing and Configuring a New HDD / SSD

## Practicals

- Demonstration of different generation's RAM compatible with the system, showing speed, & other features
- Hand on practice to install RAM on the slot provided on the compatible main board
- Demonstration of different types of HDD/SSD, showing speed, characteristics & other features
- Hand on practice to install HDD / SSD or both in a System
- Hands on practice to make a HDD /SSD as Primary/ Secondary Master / Slave using IDE Jumper settings or cable select
- Fresh installation an HDD/SSD, Partition, Installation of OS, Application S/W

# Module 9

## Computer Accessories

### Keyboard & Mouse

- Types of Keyboards
- Keyboard Interfaces (DIN Type, PS/2, USB, wireless)
- Keyboard Problems and Troubleshooting
- Types of Mouse (Ball Mouse, Optical Mouse, Trackball)
- Principles of Mouse (Ball Mouse & DSP, Sensor in Optical Mouse). Mouse Interfaces (Serial, PS/2, USB, wireless), Mouse Problems and Troubleshooting

### Monitor

- Types of Monitors (CRT/LCD/LED), Working Principles of each type
- Demonstration and Practical on Monitor Installation, Menu Configuration, Adjusting Monitor Settings, Monitor Power Supply types, Possible Problems and Troubleshooting

### Printer

- Types of Printers (Dot Matrix, Inkjet, Laser, Thermal, All-in-One Printers, etc.)
- Working Principles of each type, network Printer
- Installing a Printer and Configuring Drivers
- Installation of Scanner, Device Driver Installation
- Scanner Settings, Scanning Documents, Photos in different Formats like JPG, PDF etc

### Optical Drive

- Types of Media- (CD/DVD/ Blu-ray)
- Layers of CD and DVD, Difference between CD and DVD
- Storage Technology - Reading, Writing & Re Writing data, Drive Interfaces
- Creating, Managing and Burning ISO Images using tools like: Magic ISO, etc

# Module 10

## Virus/ Malwares

- Types of networks such as (PAN, LAN, MAN, CAN, WAN)
- Basic concept of Transmission Types: Simplex, Half duplex and full duplex Mode
- Basic concept of Internet, Intranet, extranet

## Practicals

- Hands on practice with different types of Securities might be imposed for a safe system
- Internet protocols and security breach
- Antivirus software, types, installation, Mechanisms

## Module 11

### Data Communications and Networking.

- Identify various network media needed to make successful LAN and WAN connections and their distinct roles
- Understanding the basic concepts of Client, Server, Workstation, Hubs and their applications
- Understanding different types of Network architectures: Peer-to-Peer, Client-Server and Distributed
- Basic concept of Transmission Types: Simplex, Half duplex and full duplex Mode

## Practicals

- Demonstration of different types of Network Implementation through Slides / Pictures
- Demonstration of Client, Server, Workstation, Hubs and their applications through Slides / Pictures
- Hand on Practice to identify Peer-to-Peer, Client-Server and Distributed network system
- Transmission media types Identification

## Module 12

### Knowledge of Network Topologies, Networking Devices, Transmission Media, Sharing of resources

- Identify different topologies used in networking with their relative advantages and disadvantages
- Understanding the knowledge about various types of networking devices and media with their usage
- 1IP addressing, MAC addressing, Install and configure a network and configure IP address static and dynamic, DNS, default gateway

- Design, calculate, and apply subnet masks and addresses to fulfill any organization's requirements
- Working with installation of Network card, altering MAC address and revealing original MAC
- Knowledge of making crossover and straight cable
- Introduction to windows networking
- Introduction to Linux Networking. Configuring IP Address on Linux Systems

## Practicals

- Crimping RJ45 Connectors, CAT V/ VI wired Color Matching for Type A and Type B Connection
- Hand on practice for communication to windows networking
- Data Sharing, Printer Sharing
- Remote Desktop Connection using Windows RDC
- Creating Shared Folders for each user, Assigning Access Rights and Changing Ownership for Shared Folders using File Server Wizard

## Module 13

### Knowledge of Internet & Internet Network Configuration

- Introduction to Internet, Uses of Internet, Working on Internet using various browsers like Edge, Chrome, Firefox, Opera, etc. Explaining URL, HTTP, HTTPS, etc. Clearing Browser Cache
- Creating Mail ID's, Send/Receive Mails, Mail Client Configuration using Outlook/Thunder bird Internet Configuration using ADSL Router
- Introduction to Network Devices: ADSL Router, Wi-Fi Router, Wireless Access Point. Firewall Concepts

## Practicals

- Hand on practices on internet, mail and browser properties, security settings
- Configuring mailbox with Outlook
- Hands on practice to configure Router Admin password
- Create and configure SSID for secured Wireless connection through a router

# Program Projects

Get Hands on Practical Learning Experience with Live Projects.



## HARDWARE

1. Trouble shooting System
2. Trouble shooting Devices
3. Trouble Shooting Software



## NETWORKING

1. Design Networks
2. Design Medias
3. Transport Layer Protocol Project



## MICROSOFT OFFICE

1. Installing all components with Add-ins
2. Configuration
3. Trouble shooting

# Practical Projects

Micro Batches with focus on learning by doing.



# Program Highlights

Curated with care, considering the latest industry trends.



## Industrial Projects

Learn and apply concepts on industry projects along with personalized industry mentorship.



## Hardware & Networking tools

Learn professional tools to excel your career as a Hardware & Networking Expert.



## Blended Learning

Learn with the ease and flexibility of recorded as well as live sessions for wholesome learning experience.



## E-portfolio

Showcase your expertise to potential employers using an e-portfolio from Awdiz.



## Hands-on Learning

Practical Learning for Solution Development Life Cycle & Work on multiple industry projects.



## Personalized Mentorship

Get unparalleled personalized mentorship and doubt resolution from Industry experts.

# Awdiz

# Learning Experience

Explore through various benefits of Awdiz, that makes your Hardware & Networking Career a piece of cake!



**200+ hours of** professional practice to master Fundamentals & required skills in an actual environment of network.



In-depth, **interview-focused System** with Trending industry knowledge to ace your interviews.



**Real work experience** of addressing technical challenges from leading network companies.



**Live sessions well structured interactive workshops** every month from industry professionals.



**Portfolio** with work-experience certificate to impress potential recruiters.



**Placement guarantee** with job-search support, referrals, and career guidance from future.

# Fee Structure

At AWDIZ, we understand that investing in your education is a significant commitment. We are committed to making quality IT education accessible to all, which is why we offer most affordable course in Mumbai.

Become a Hardware & Network Engineer

Just at **Rs.5,750 /** Month  
EMI Plan



**Zero Cost EMI** Our EMI option comes with zero Cost, making it an affordable choice for every student.



**Flexible Tenures** In extreme cases we are open and Flexible regarding fee payments.



**Easy Application** Applying to Awdiz is very easy and Hassle free Experience. Our Program Managers are present 24X7 for your doubts.



**No Hidden Charges** We believe in transparency. There are no hidden charges or processing fees associated with our payment options.

# Hardware & Networking Course

Only Institute to Offer Placement Guarantee

**Rocket Your Career  
with Awdiz**



Speak to Our Placement Head at  
**+91 7678000695 | 8657202255**

Email Us at  
**[contact@awdiz.in](mailto:contact@awdiz.in)**

Visit Our Website  
**<https://www.awdiz.in/placements-awdiz-students-list>**

View Our Testimonials at  
**<https://www.youtube.com/@Awdizmetaverse>**