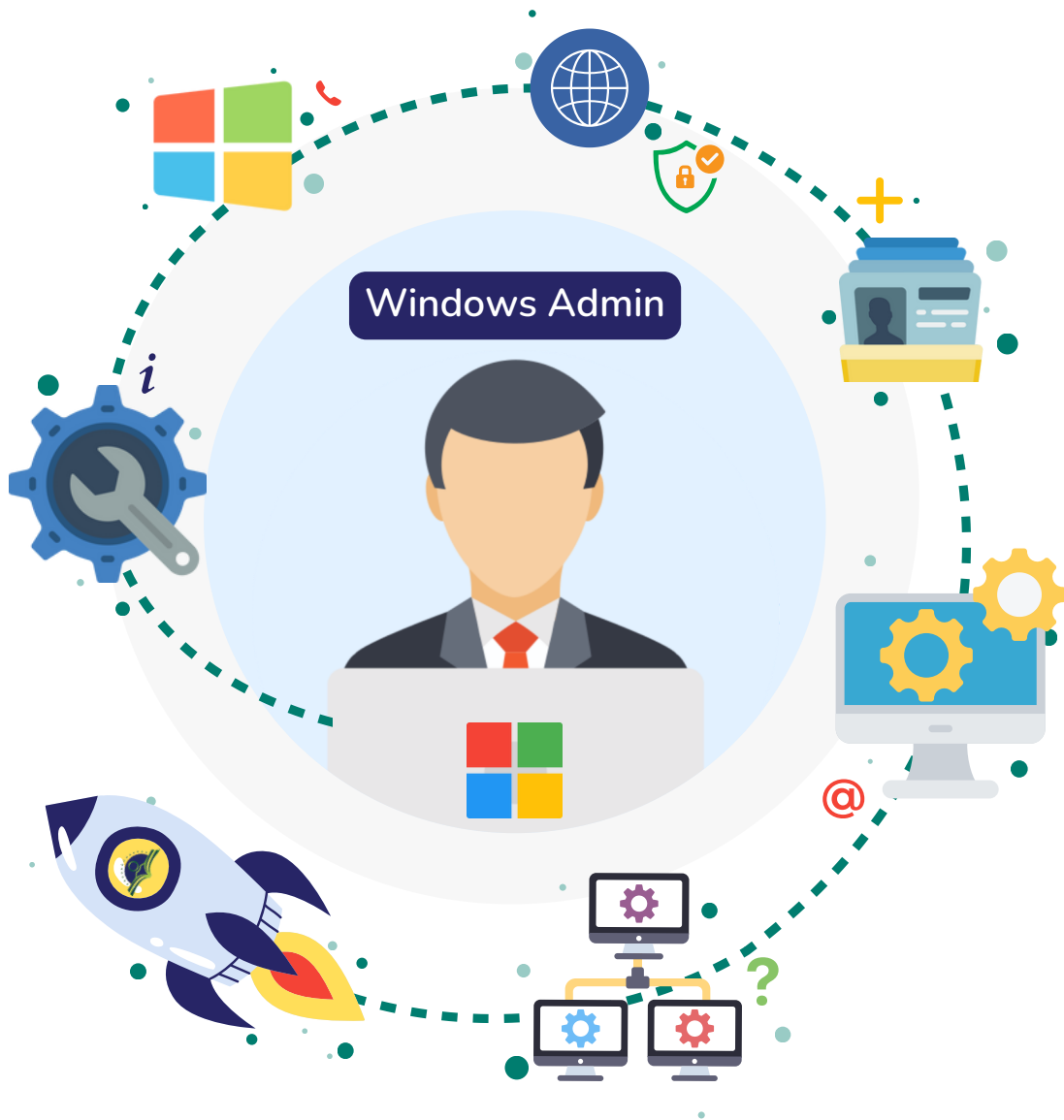




Windows Admin Course

Only Institute to Offer Placement Guarantee Course



Our students are placed in top MNCs

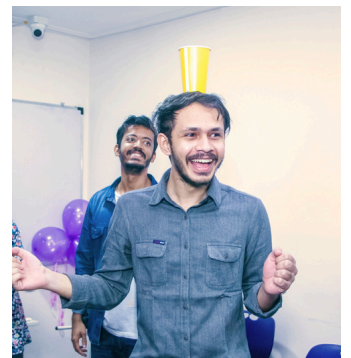


10th ANNIVERSARY CELEBRATION

Since 2013

We have successfully trained & placed 1000+ Candidates in Top MNC's throughout India

Join Awdiz For a Bright IT Future





“Most Trusted IT Institute In Mumbai 2024”
Awarded by National Fame Awards 2024





About Awdiz

Awdiz is No.1 IT Training Institute in Navi Mumbai For Freshers With 100% Job Guarantee Courses.

Established in 2013, We Are One of The Premium Training Institute Delivering Job Assured Trainings on Networking, CCNA, MCSA, Linux Administration, Windows Administration, Full Stack Development, Digital Marketing, and UI UX Design Course.

We are committed to quality education and our 10+ years of experience has made us serve over 45+ IT clients across 13 cities in India for all the freshers off campus placements.

Our strength is our **Guaranteed Placement for all our IT courses.**



5000+

Students Served



100+

Companies



100%

Parents Satisfaction



96%

MNC Placements

★ Trustpilot 4.8

Google 4.9

AmbitionBox 5.0

Our Placements

At AWDIZ, we recognize that your primary goal is to land rewarding and fulfilling career opportunities in the IT industry. Our commitment to your success extends beyond education, we are dedicated to helping you launch your career.



Sameer Lawade
4.5 LPA package

Landed a job in July 2023



Ragini.M
2.4 LPA package

Landed a job in July 2023



Jyoti.G
3.0 LPA package

Landed a job in July 2023



Sid Waze
7.3 LPA package

Landed a job in July 2023



Kunal Pol
2.8 LPA package

Landed a job in July 2023



Raj Sankhe
4.0 LPA package

Landed a job in July 2023

They Fulfilled their Dreams



YOU CAN BE THE NEXT!



INTERNET INFORMATION

Covers IIS, installation,
configuration, website hosting,
and real-world scenarios



VMWARE

Covers virtualization, vSphere,
cloud computing (IaaS, SaaS,
PaaS), and lab setup



WINDOWS FUNDAMENTALS

Windows differences,
installation, hardware,
troubleshooting, peripherals,
maintenance

WINDOWS ADMIN



ACTIVE DIRECTORY

Active Directory installation,
configuration, terminology, group
policy design, PDC/ADC creation



ADVANCE WINDOWS

Setting up IE, firewall, email file
formats, AD, DNS, DHCP, domain
management, DNS zones, DHCP
control



NETWORK FUNDAMENTALS

LAN, WAN, OSI, TCP/IP, Ethernet,
routers, switches, IPv4, VPN,
firewall

YOUR JOURNEY STARTS HERE



System Manager **16 - 50 LPA**

IT Manager
Lead System Engineer
Cloud Architect

6 to 7 years



Senior System Engineer **8-15 LPA**

Senior Windows Administrator
Network Operation Center Analyst
Cloud Administrator

3 to 5 years



Mid-level Support Engineer **4 - 7 LPA**

Windows System Administrator
IT Support Engineer
Desktop Support Engineer

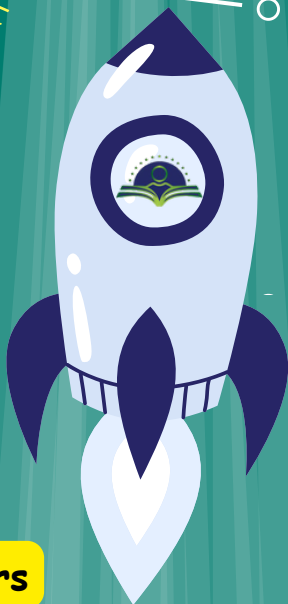
1 to 2 years



Junior Support Technician **2 - 4 LPA**

Windows Support Technician
Helpdesk Technician
Junior System Administrator

CAREER STARTS HERE



Program Details

Are you ready to embark on an exciting journey into the world of Windows Admin? Our comprehensive course is designed to equip you with the skills and knowledge needed to become a proficient Windows Administrator.

Program Duration

- **Course Duration :** 3 Months | Blended
- **Total Hours :** 100 hours

Eligibility

- **Education :** Any Graduation
- **Experience :** No Prior Experience Required

Weekly Commitment

- **Lectures & Workshops :** 8 hours/week
- **Homework & Projects :** 12 hours/week



2 Classes Offline
2 hours each



2 Classes Online
2 hours each



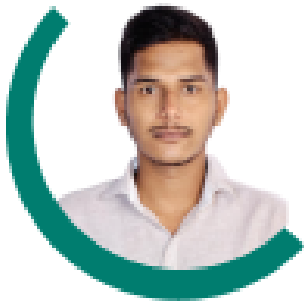
Study at your
own pace



Get Hands on
Experience

Student Success Stories

These testimonials are just a glimpse of the many success stories that have emerged from our institute. We are committed to nurturing talent, honing skills, and helping students reach their career aspirations.

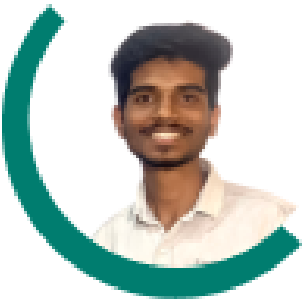


Sameer Lawade

Windows + Cloud Admin



Awdiz helped me shape my career with their excellent coaching and placement system. They did their best at providing me many placement opportunities and helped me secure a 4.5 LPA offer with ease...



Kunal Pol

Windows Admin



A Simple Google review got me a job! Google Recommended me Awdiz, and then I called for a Demo lecture, after which I was satisfied and decided to pursue my Windows Admin Course at Awdiz...

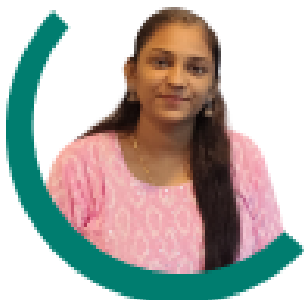


Jyoti. G

Windows Admin



I was empowered at by this course! It helped my crack a 2.9 LPA and I was overwhelmed with emotions. My experience at Awdiz was very Enriching I would recommend it to my fellow Juniors...



Ragini. M

Windows + Cloud Admin



Being from a Non-Technical background getting placed in a Top IT company Company was just like a dream come true. Awdiz helped me achieve this with their excellent placement support services...

And Many More...

Career Opportunities

Unlock a world of exciting career opportunities, with the Knowledge and skills gained from our and achieve your professional aspirations.

Windows Admin Career Path



Program Curriculum

Get the best in class knowledge of the all the Windows essentials and be future ready!

Module 1

Computer Fundamentals & Basics of Power System in a Computer

- Computer Fundamentals History and Generations of Computer (Gen 1 to 5)
- Architecture of the Computer
- Description of Different parts of a computer
- Idea about System Software and Application Software. Operating system
- Concept (Basic knowledge)

Practicals

- Identification of different Components of a computer and demonstration and uses of them
- Different Tools / equipment used for assembling/ disassembling a PC

Module 2

Introduction to SMPS

- SMPS Features, Functions
- Types of SMPS
- Power distribution in SMPS
- Connecting, Maintenance and Troubleshooting

Practicals

- A running SMPS demonstration
- Installation of a SMPS on a cabinet
- Isolated Power testing by sorting

Module 3

Introduction to Basic Input Output System.

- Introduction to BIOS/CMOS Setup, POST (Power on Self-Test)
- Demonstration of BIOS/CMOS Configuration (Date, Time, Enable/Disable Devices)
- Dual BIOS Feature BIOS/CMOS Setup, Booting Sequence/Boot Order
- Demonstration of BIOS / CMOS setup, POST in a Computer step by step
- Demonstration of different types of configurations and effect of changes in an existing BIOS feature for a system
- Implementation of Dual Booting setup preferably in windows with Linux (Ubuntu)

Practicals

- Demonstration of BIOS / CMOS setup, POST in a Computer step by step
- Demonstration of different types of configurations and effect of changes in an existing BIOS feature for a system
- Implementation of Dual Booting setup preferably in windows with Linux (Ubuntu)

Module 4

Introduction to Operating System.

- Definition and types of Operating Systems. Functions & Features of OS
- MS-DOS (Prelims), Windows 8.1, 10, 11, Red Hat 7 / Fedora Linux Server, Ubuntu, MAC OS etc.
- Process of Booting the Operating System
- Installation of Windows 8.1, 10, 11 Activation and Automatic Updating procedures

Practicals

- Demonstration on Windows Using: Safe Mode, Safe Mode Boot options, Last Known Good Configuration, etc.
- Demonstrating Windows Diagnostic Tools, System Restore, Creating Restore point, restore using Restore point, etc.
- Windows Recovery using System Factory Defaults/Recovery tools
- Installation of driver for the system

Module 5

Computer Management.

- Computer Management, Disk Management, Defragmentation
- Services and Applications, Local Users and Groups
- Advanced System Settings, Device Manager, Task Manager

Practicals

- Demonstration on Windows Using: Safe Mode, Safe Mode Boot options, Last Known Good Configuration, etc.
- Demonstrating Windows Diagnostic Tools, System Restore, Creating Restore point, restore using Restore point, etc.
- Windows Recovery using System Factory Defaults/Recovery tools
- Installation of driver for the system

Module 6

Disk Partitioning

- Demonstration of Partitioning of Hard Drive/ SSD - Primary, Extended, and Logical partitions using Partition Tools in Windows through Disk Manager

Practicals

- Demonstration of Partitioning of Hard Drive/ SSD - Primary, Extended, and Logical partitions using Partition Command (mkpart) in Linux

Module 7

Details about Central Processing Unit & Main board

- Definition of CPU, Architecture, Speed, Types of CPU (ATX and AT technologies) 32/64 Bit
- Types process or technologies like Clock speed, Bus speed, Cache memory
- Threading technologies, Core technologies, IRQ & DMA Technologies
- What is "I" Technology, Core series (i3, i5, i7)
- To explain about PGA and BGA and LGA Model processors, Pins/Sockets
- Definition, Architecture, Compatibility with CPU's, Chipsets and Brands
- What is Chipset, what is FSB, what is Bus, CPU Sockets, Interface Ports used to connect different Peripherals
- I/O Ports (PS/2, Serial, Parallel, USB, VGA, HDMI, Audio, Ethernet, etc.)
- Identifying Expansion Slots (PCI, AGP etc.), Power Form Factor

Practicals

- Demonstration on Windows Using: Safe Mode, Safe Mode Boot options, Last Known Good Configuration, etc
- Demonstrating Windows Diagnostic Tools, System Restore, Creating Restore point, restore using Restore point, etc
- Windows Recovery using System Factory Defaults/Recovery tools
- Installation of driver for the system

Module 8

Primary and Secondary Memory

- Introduction to RAM, ROM, Cache Memory, Buffer Memory, Virtual Memory. Speed, Timeline (EDO, NON-EDO, SD, RD, DDR, DDR2, DDR3, DDR4), Hybrid Memory
- Comparing and Installing RAM, Memory Module Form Factor, etc
- Introduction to HDD& SSD, Types, Functioning of HDD, Functioning of SSD, Dual Usage
- Interface Types of HDD & SSD (IDE or PATA, SATA, SCSI, PCI -E, MSATA, M.2), Data storage technique
- Tracks, Sectors, Cylinders, Cluster MBR, FAT Area, DIR Area, Zero Track
- IDE Jumper settings (Primary/Secondary), (Master/Slave/Cable Select)
- Installing and Configuring a New HDD / SSD

Practicals

- Demonstration on Windows Using: Safe Mode, Safe Mode Boot options, Last Known Good Configuration, etc
- Demonstrating Windows Diagnostic Tools, System Restore, Creating Restore point, restore using Restore point, etc
- Windows Recovery using System Factory Defaults/Recovery tools
- Installation of driver for the system

Module 9

Computer Accessories

Keyboard & Mouse

- Types of Keyboards
- Keyboard Interfaces (DIN Type, PS/2, USB, wireless)
- Keyboard Problems and Troubleshooting
- Types of Mouses (Ball Mouse, Optical Mouse, Trackball)
- Principles of Mouse (Ball Mouse & DSP, Sensor in Optical Mouse)
- Mouse Interfaces (Serial, PS/2, USB, wireless), Mouse Problems and Troubleshooting

Monitor

- Types of Monitors (CRT/LCD/LED), Working Principles of each type
- Demonstration and Practical on Monitor Installation, Menu Configuration, Adjusting Monitor Settings, Monitor Power Supply types, Possible Problems and Troubleshooting

Printer

- Types of Printers (Dot Matrix, Inkjet, Laser, Thermal, All-in-One Printers, etc.)
- Working Principles of each type, network Printer
- Installing a Printer and Configuring Drivers
- Installation of Scanner, Device Driver Installation
- Scanner Settings, Scanning Documents, Photos in different Formats like JPG, PDF etc

Module 10

Networking Fundamentals

- Types of networks such as (PAN, LAN, MAN, CAN, WAN)
- Basic concept of Transmission Types: Simplex, Half duplex and full duplex Mode
- Basic concept of Internet, Intranet, extranet

Module 11

Knowledge of Network Topologies, Networking Devices, Transmission Media, sharing of resources, Network Addressing system.

- Identify different topologies used in networking with their relative advantages and disadvantages
- Understanding the knowledge about various types of networking devices and media with their usage
- IP addressing, MAC addressing, Install and configure a network and configure IP address static and dynamic, DNS, default gateway
- Design, calculate, and apply subnet masks and addresses to fulfil any organization's requirements
- Working with installation of Network card, altering MAC address and revealing original MAC, Knowledge of making crossover and straight cable
- Introduction to Linux Networking. Configuring IP Address on Linux Systems
- Working Principles of each type of Networking protocols such as (DHCP, DNS, FTP, SSH, Telnet)

Practicals

- Crimping RJ45 Connectors, CAT V/ VI wired Color Matching for Type A and Type B Connection
- Hand on practice for communication to windows networking
- Data Sharing, Printer Sharing
- Remote Desktop Connection using Windows RDC
- Creating Shared Folders for each user, Assigning Access Rights and Changing Ownership for Shared Folders using File Server Wizard
- Internet Configuration using ADSL Router
- Hands on practice to configure Router Admin password
- Create and configure SSID for secured Wireless connection through a router

Module 12

Introduction to windows server 2019

- Introduction to OS and its types
- Difference between domain and workgroup mode
- Comparison of Desktop v/s server
- Min hardware Requirement, Editions, Types of Installation

Practicals

- Introduction to OS and its types
- Difference between domain and workgroup mode
- Comparison of Desktop v/s server
- Min hardware Requirement, Editions, Types of Installation

Module 13

Introduction of Active Directory

- Introduction to AD
- Active Directory Components
- Logical structure of AD
- Physical structure of AD

Practicals

- Deploying DC
- Managing users & groups
- Managing OU

Module 14

Introduction of File Server

- Introduction to File Server
- Types of Permissions

Practicals

- Share permission

Module 15

Introduction of DHCP Server

- Introduction to DHCP
- DHCP Components and its working
- Managing and Troubleshooting DHCP

Practicals

- Deploying DHCP server
- Configuring and managing DHCP
- DHCP Failover

Module 16

Introduction of DNS Server

- Introduction to DNS
- DNS Hierarchy
- DNS terminologies

Practicals

- Implementing DNS server
- Configuring zones in DNS
- Configuring Name resolution between DNS zones

Module 17

Introduction of Group policy

- Group Policy scope and Group policy processing
- Implementing administrative templates

Practicals

- Configure folder redirection
- Configure software installation and Folder redirection,
- Software installation and security policy
- Configure software restriction policy

Module 18

Hyper-V

- 18.1. Overview of Hyper-V
- Hyper-V Networking
- Managing Hyper-V

Practicals

- 18.1. Installing Hyper-V
- Configure storage on Hyper-V host
- Configure networking on Hyper-V host
- Managing Hyper-V machines

Module 19

Operation master Role

- Introduction to FSMO
- Types of FSMO

Practicals

- FSMO Configuring
- Transferring FSMO roles

Module 20

Introduction of ADC, CDC, RODC

- Introduction to ADC
- Introduction to CDC
- Introduction to RODC
- Child relationship

Practicals

- Configure ADC
- Configuring CDC
- Configure RODC

Module 21

Windows server backup

- Configure windows backup and restore

Module 22

Virtual Private Network

- Introduction to VPN
- VPN protocols

Practicals

- Configuring VPN

Program Projects

Get Hands on Practical Learning Experience with Live Projects.



HARDWARE

1. Trouble shooting System
2. Trouble shooting Devices
3. Trouble Shooting Software



ACTIVE DIRECTORY

1. Create User AD
2. Manage Access AD Level & Local Sys Level
3. File share, creation and access to newly created users



DNS & DHCP

1. Public DNS Record Creation
2. Website Code Hosting & IIS
3. DR strategy for DHCP, DNS, AD

Practical Projects

Micro Batches with focus on learning by doing.



Program Highlights

Curated with care, considering the latest industry trends.



Industrial Projects

Learn and apply concepts on industry projects along with personalized industry mentorship.



Windows Languages

Learn programming languages and tools to excel your career as a Windows Admin.



Blended Learning

Learn with the ease and flexibility of recorded as well as live sessions for wholesome learning experience.



E-portfolio

Showcase your expertise to potential employers using an e-portfolio from Awdiz.



Hands-on Learning

Practical Learning for Solution Development Life Cycle & Work on multiple industry projects.



Personalized Mentorship

Get unparalleled personalized mentorship and doubt resolution from Industry experts.

Awdiz

Learning Experience

Explore through various benefits of Awdiz, that makes your Windows Career a piece of cake!



200+ hours of professional practice to master Fundamentals & required skills in an actual environment of network.



In-depth, **interview-focused System** with Trending industry knowledge to ace your interviews.



Real work experience of addressing technical challenges from leading network companies.



Live sessions well structured interactive workshops every month from industry professionals.



Portfolio with work-experience certificate to impress potential recruiters.



Placement guarantee with job-search support, referrals, and career guidance from future.

Fee Structure

At AWDIZ, we understand that investing in your education is a significant commitment. We are committed to making quality IT education accessible to all, which is why we offer most affordable course in Mumbai.

Become a Windows Admin Just At
Just at **Rs.5,750 /** Month
EMI Plan



Zero Cost EMI Our EMI option comes with zero Cost, making it an affordable choice for every student.



Flexible Tenures In extreme cases we are open and Flexible regarding fee payments.



Easy Application Applying to Awdiz is very easy and Hassle free Experience. Our Program Managers are present 24X7 for your doubts.



No Hidden Charges We believe in transparency. There are no hidden charges or processing fees associated with our payment options.

Windows Admin Course

Only Institute to Offer Placement Guarantee

**Rocket Your Career
with Awdiz**



Speak to Our Placement Head at
+91 7678000695 | 8657202255

Email Us at
contact@awdiz.in

Visit Our Website
<https://www.awdiz.in/placements-awdiz-students-list>

View Our Testimonials at
<https://www.youtube.com/@Awdizmetaverse>